

" **VRM** TROPHY OF THE DUNES "   
 CM.COM CIRCUIT ZANDVOORT



# Briefing

## Supercar Challenge



Website [www.supercarchallenge.nl](http://www.supercarchallenge.nl)



# Digital Notice Board



# Sportivity

For direct event information please download the Sportivity app and insert this password:

**Supercar2022**  
**VRM2022**

**Time schedule V10**



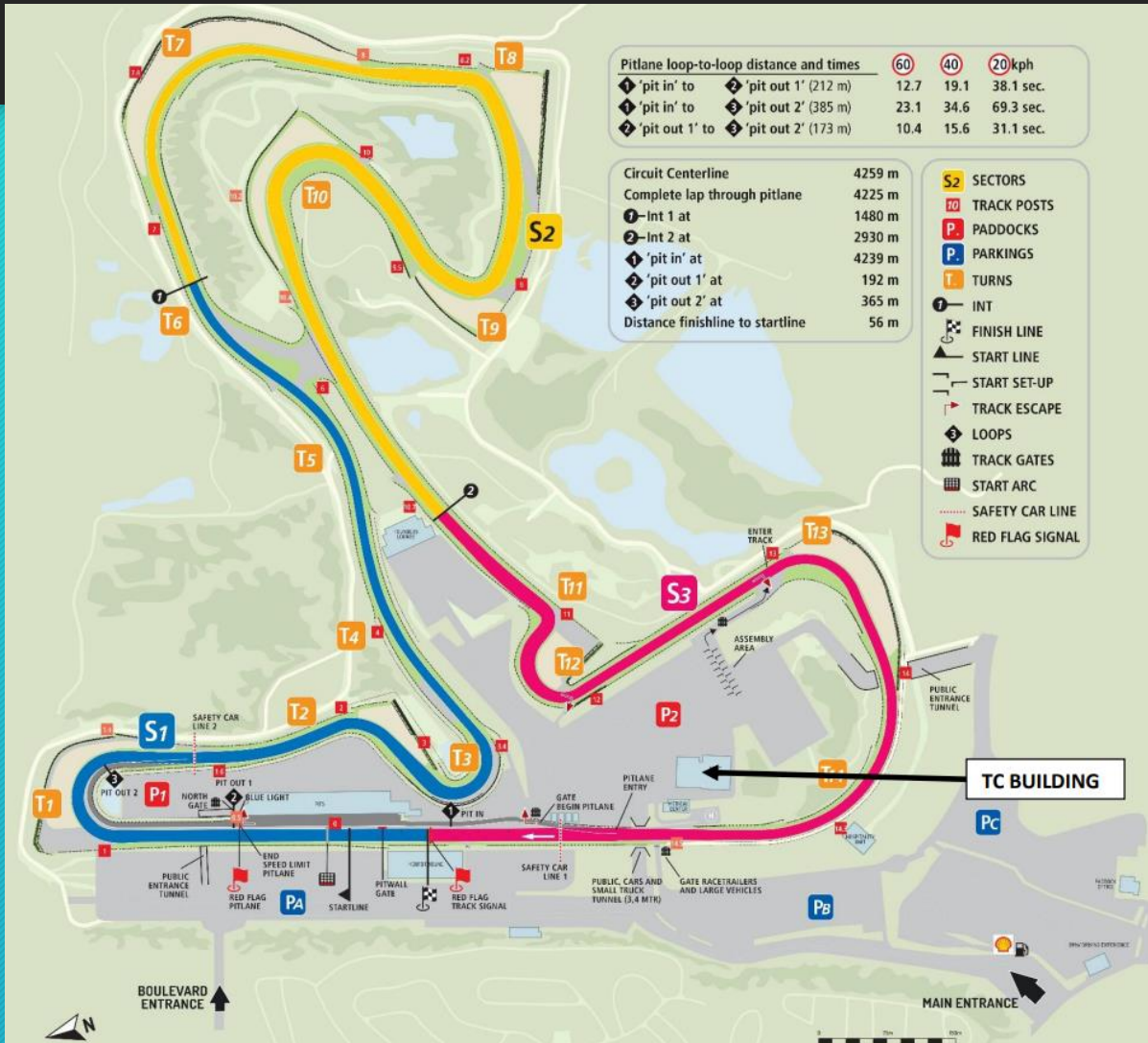
Available on the  
**App Store**



Get it on  
**Google play**



# CM.com Circuit Zandvoort 2022



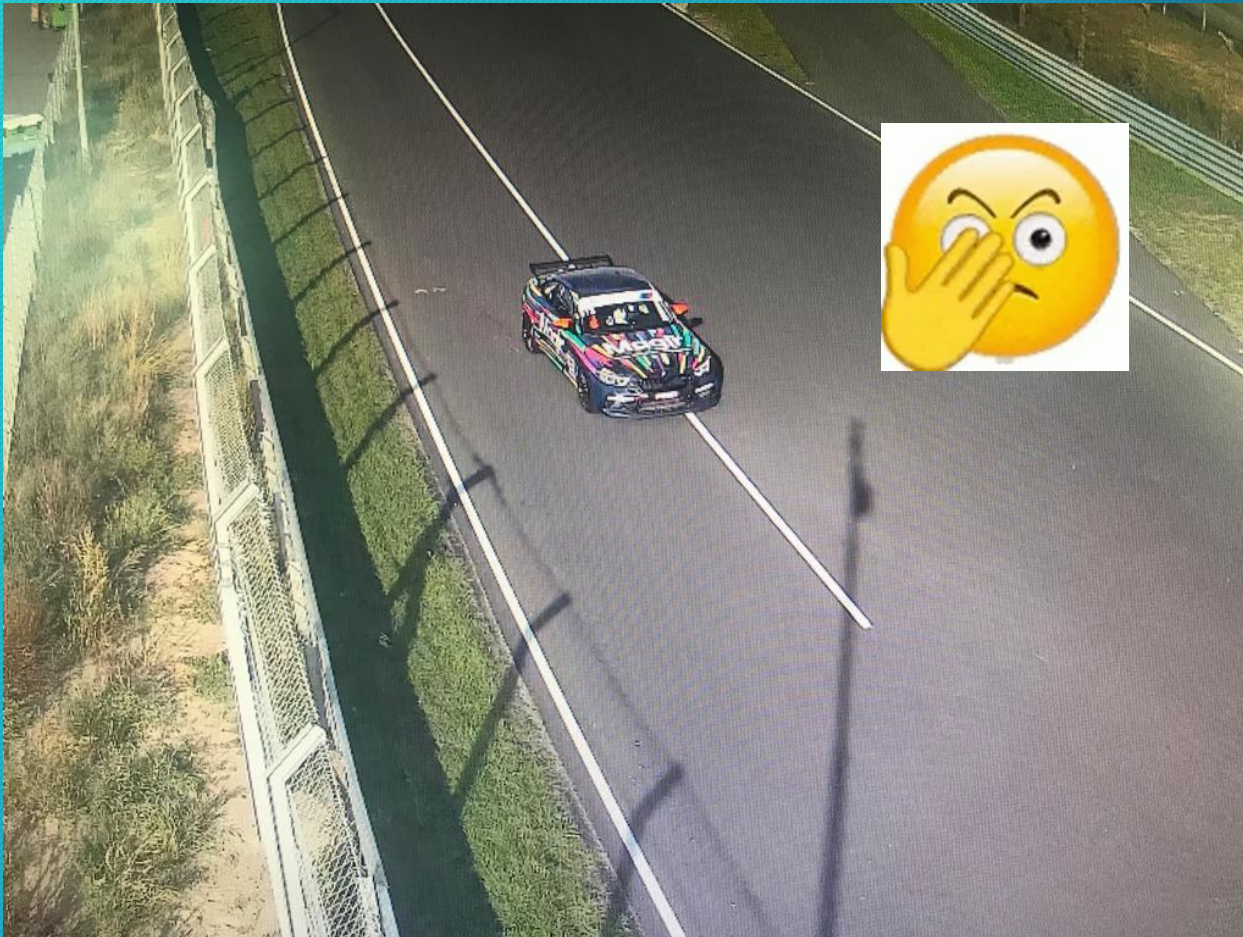


# Exit Pitlane & Tarzan corner



Exit pitlane:  
Do not cross the white line.

White line...! = Safety line!





# Turn 3



**Tracklimits!**



**If you are Slow?  
Stay low!**



# Turn 5



# Turn 7

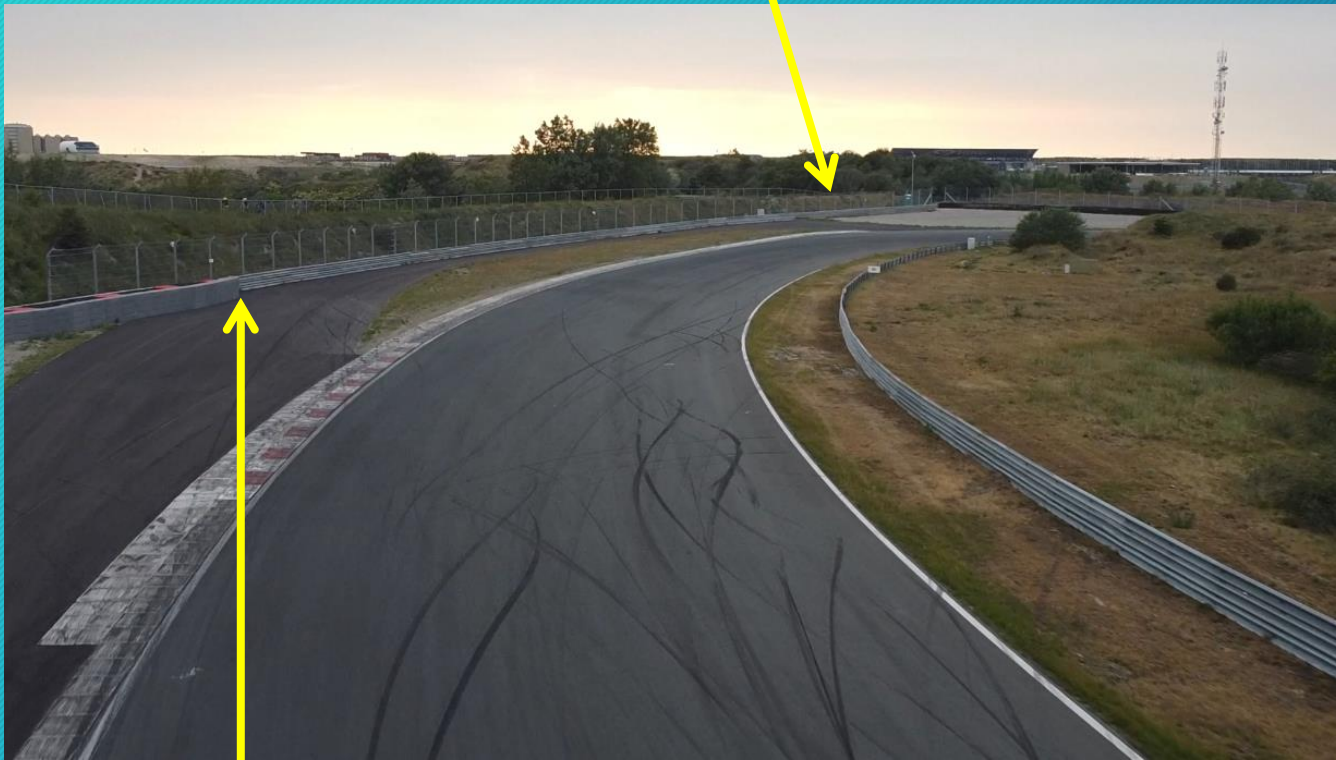




# Turn 8 and 9



Return on track, give way!



Asfalt run off area

# Turn 10





# Turn 11-12



Asfalt run off area

# Turn 13



**Exit Track**

**Only after  
chequered Flag  
Qualify and  
Races!**



# Turn 14

**If you are Slow?  
Stay low!**



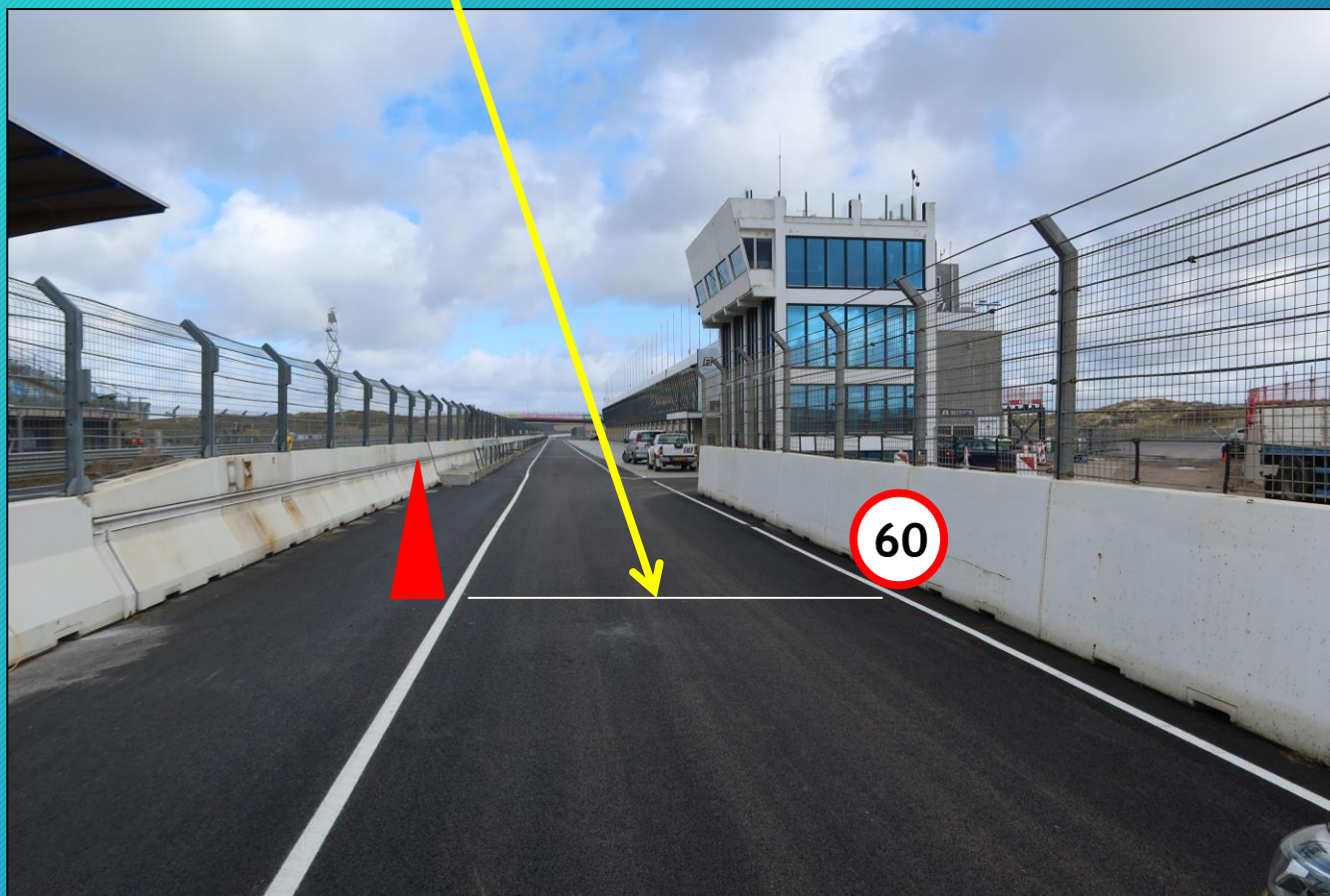
# Pit Entry



Pitlane in,  
stay right  
and use indicator



# Speedlimit of 60km/hour!



# Pitlane (60 KpH)

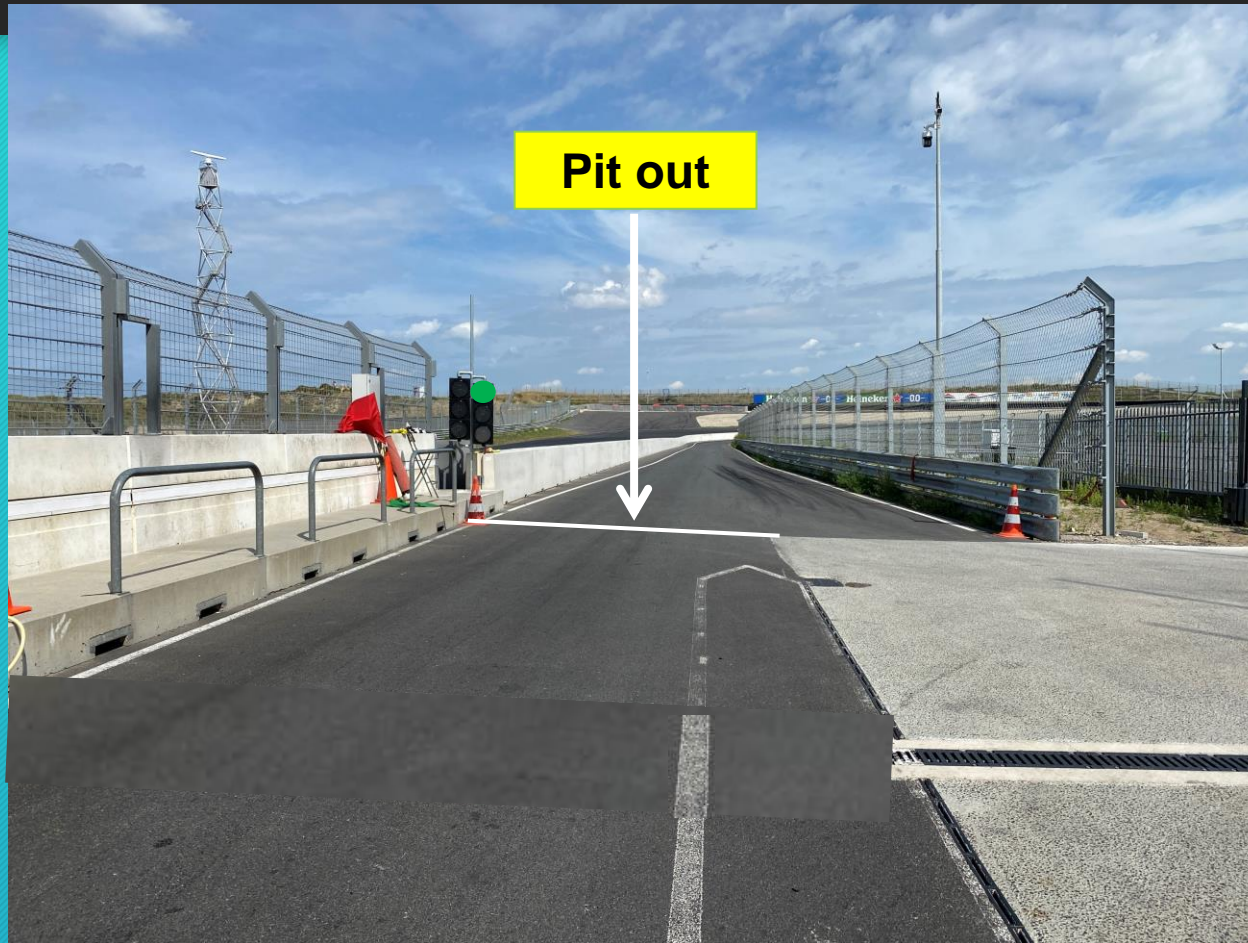


Fast lane

Working Lane



Lights at end of pitlane is end of  
60 km/uur



# Run off Turn 1 (Do not reverse)





# Run off Turn 1 (back on track)

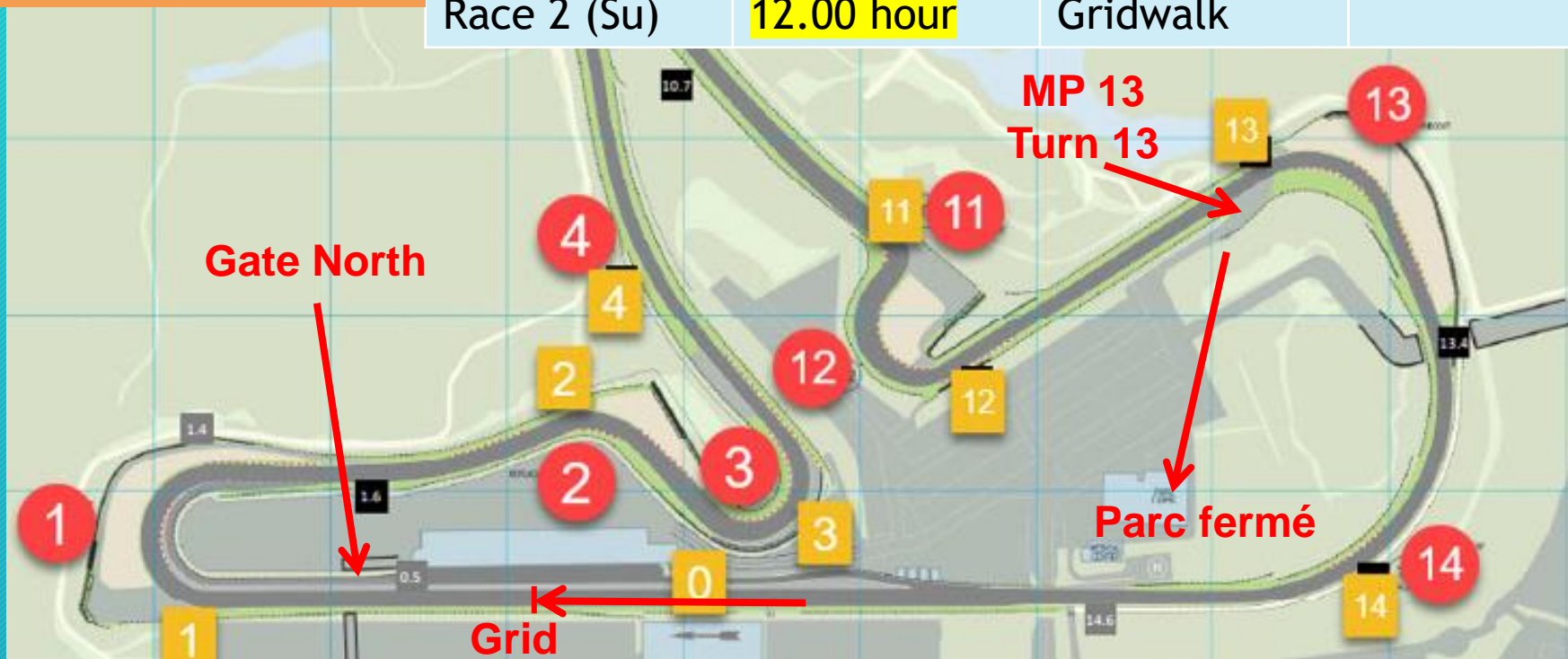


# Logistics

V-Max series

All cars must be at the pre-start area 20 min. before the official session starting time

Session	Pre-start	Start session	Exit track
Free Practice	Paddock 1 Pitlane	From pitlane Gate North	Entry pitlane
Qualifying	Paddock 1 Pitlane	From pitlane Gate North	MP13 → Parc Fermé
Race 1 (Sa)	<b>14.45 hour</b> All cars to grid Teammember On grid	GRID warm up lap	MP13 → Parc Fermé
Race 2 (Su)	<b>12.00 hour</b>	Gridwalk	





# Rolling start



No tire trolleys on the grid.

5 min, 3 min, 1 min 30 sec. Green flag behind Leading car for 1 lap

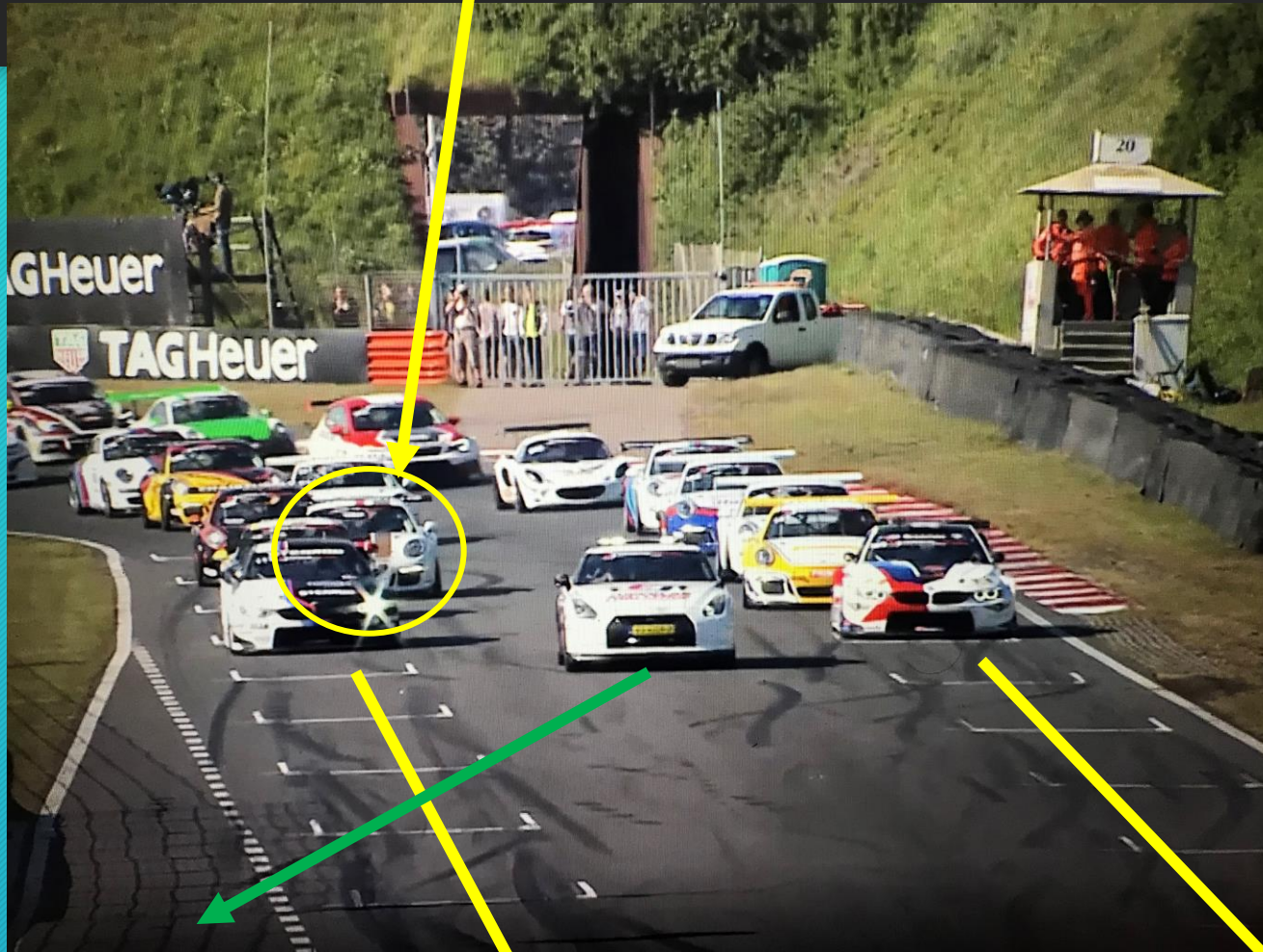


Leading  
Car



Chequered flag, full cooling down lap. All cars to Parc Fermé MP 13 except first 3 cars to podium.

# Stay in lane!!





Rolling start  
Red off = Start



# Mandatory (Split)pit stop



After Qualify:

Bulletin will be issued with all the information



# Neutralisation possibility's



Full Course Yellow (FCY) 80 KpH

Ending = Full Course green

Safety Car (SC)

Wait for green flag at control line

Red Flag (Code red)

Practise and qualify = stop in Pit Lane

Race: Stop in 1 line at red control line

# Extra Information



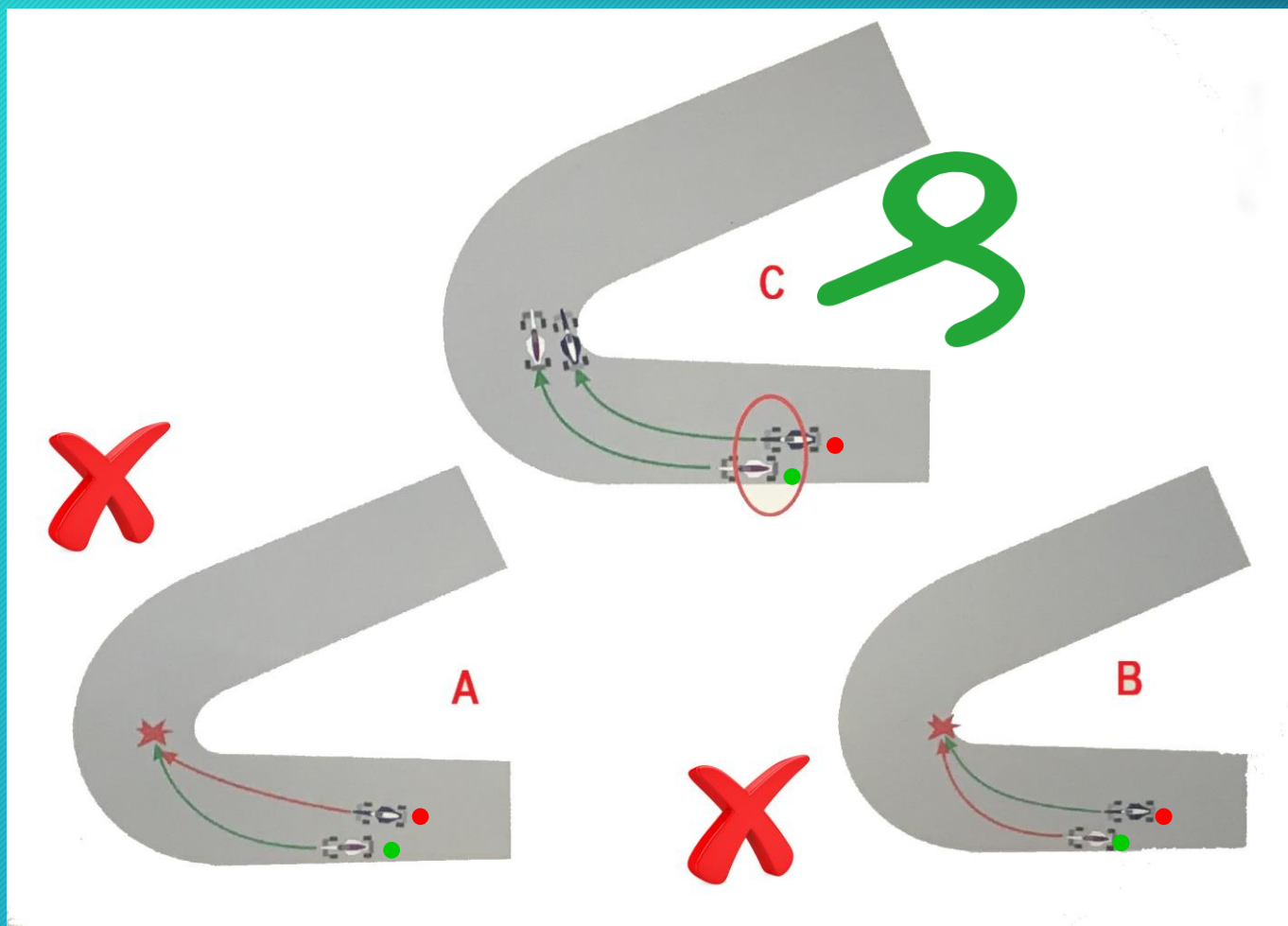
- Rain? = Lights on! Rain light!
- Technical problem = Park the Car, get out of the car and stand behind guardrail
- Chequered Flag = No overtaking! First 3 overall to podium



Orange = opening



# Driving standards



# Driving Conduct



- Jumpstart
- Ignoring flag signals or Instructions from marshals
- Overtaking under yellow, red or after chequered flag
- Speeding under FCY, Pit lane, Yellow.
- Dangerous driving behaviour with or without contact
- Unsportsmanlike behaviour
- Change direction more than once
- Take advantage of an unclear situation
- Track limits



# Driving conduct will be penalised by a fixed penalty list.



- Deleting fastest lap time(s)
- Time penalty
- Grid penalty
- Starting from pitlane
- Drive through
- Stop and Go
- Stewards decisions

Penalty comes with extra point(s) on your licence:

- 5 points                      drop of 3 places on the grid next race
- 8 Points                      drop of 10 places on the grid next race
- 10 Points                      Start from pit lane next race

# Questions?







Thank you for your attention

PLEASE **RESPECT:**

- Your opponents
- The Circuit
- The Officials!!